

EPIDEMIOLOGY AND OUTCOME OF SEVERE TRAUMA : PILOT DATA FROM THE MALAYSIAN TRAUMA REGISTRY AT HOSPITAL TENGKU PERMAISURI NORASHIKIN, KAJANG



MOHD FIZERUL AMIR SHARIFFDDIN, AWANIS AWALUDIN, AMIRA SUHAINI, NOR AIDA AINA AYUB, PRASANIYA GUNASEGARAN, LAVENASH MOHAN, SYUHADA ZAINOL ABIDIN

BACKGROUND

- SEVERE TRAUMA IS A LEADING CAUSE OF MORBIDITY AND MORTALITY IN MALAYSIA, WITH ROAD TRAFFIC ACCIDENTS AS THE MAIN CONTRIBUTOR.
- THE MALAYSIAN TRAUMA REGISTRY (MTR) PROVIDES A PLATFORM TO TRACK INJURY PATTERNS, SEVERITY AND OUTCOMES TO IMPROVE TRAUMA CARE.

OBJECTIVE

- TO DESCRIBES :
 - THE DEMOGRAPHIC CHARACTERISTICS
 - INJURY MECHANISMS
 - SEVERITY PROFILES
 - OUTCOMES OF SEVERE TRAUMA CASES

RECORDED IN THE MTR FROM HOSPITAL TENGKU PERMAISURI NORASHIKIN (HTPN) KAJANG AS PART OF A PILOT STUDY.

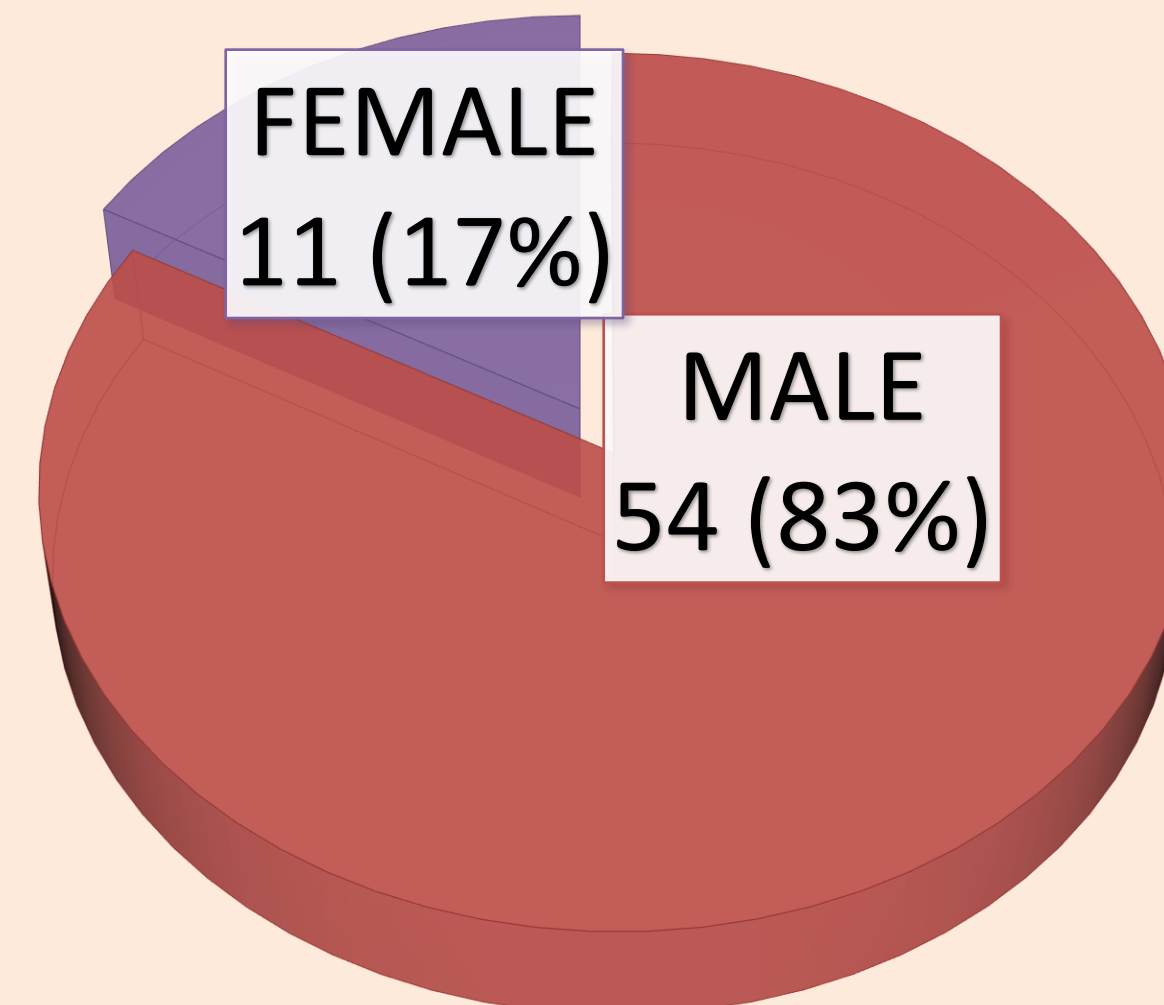
METHODOLOGY

- A RETROSPECTIVES DESCRIPTIVE ANALYSIS
- VARIABLES:
 - DEMOGRAPHICS
 - MECHANISM OF INJURY
 - INJURY SEVERITY SCORE (ISS)
 - INTENSIVE CARE UTILISATION
 - DISCHARGE OUTCOMES
- INCLUSION:
 - ALL TRAUMA PATIENTS PRESENTED TO RED ZONE IN EMERGENCY AND TRAUMA, HTPN KAJANG
- EXCLUSION:
 - DELAYED HOSPITAL ADMISSION MORE THAN 24 HOURS POST INJURY
 - DEAD BEFORE ARRIVAL

RESULT

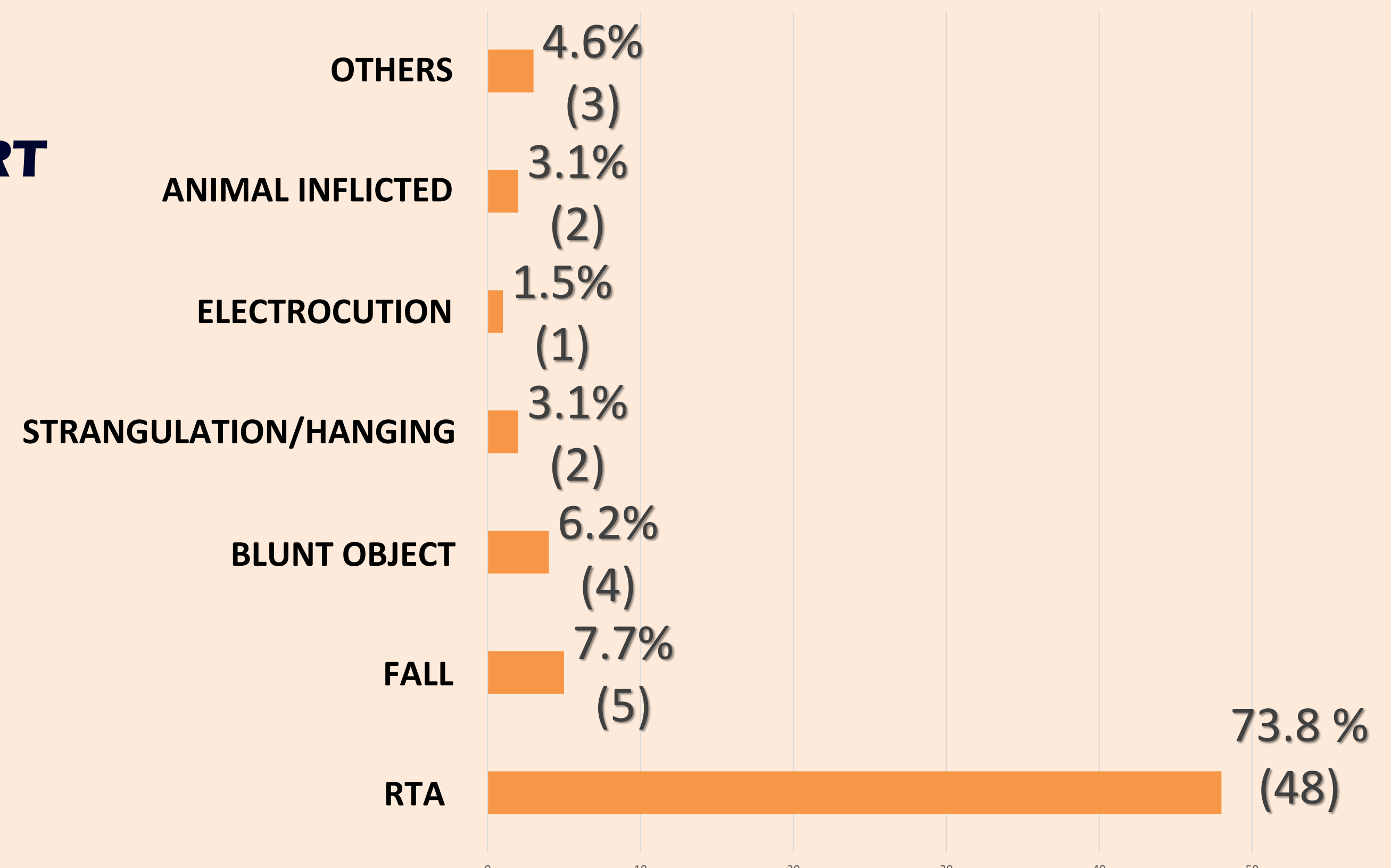
- TOTAL CASES: **65 SEVERE TRAUMA IDENTIFIED**

DEMOGRAPHIC: GENDER

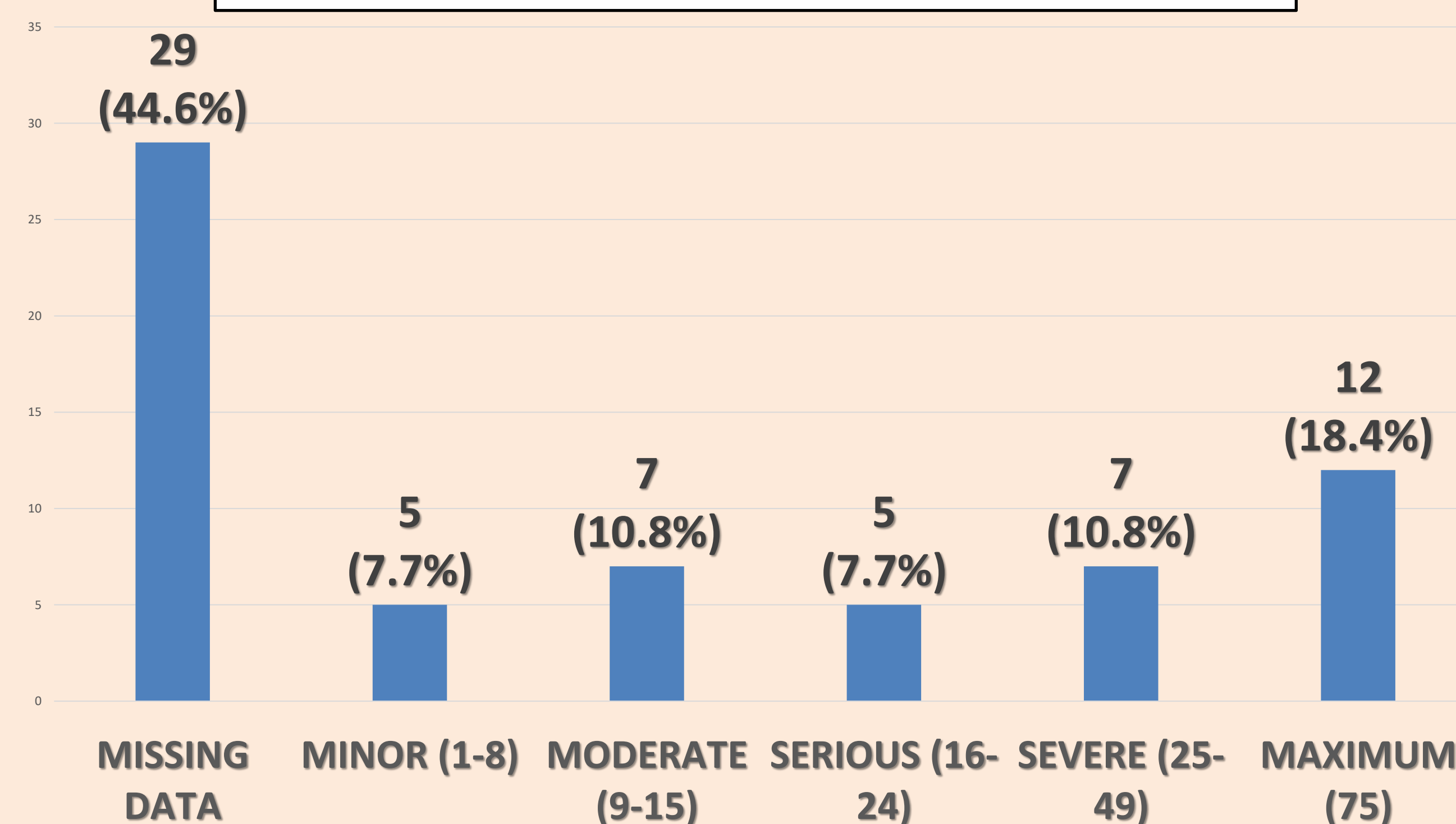


- THE MEDIAN AGE WAS 29.2 YEARS (IQR 20.6-38.0) WITH A MALE PREDOMINANCE (82.8%)

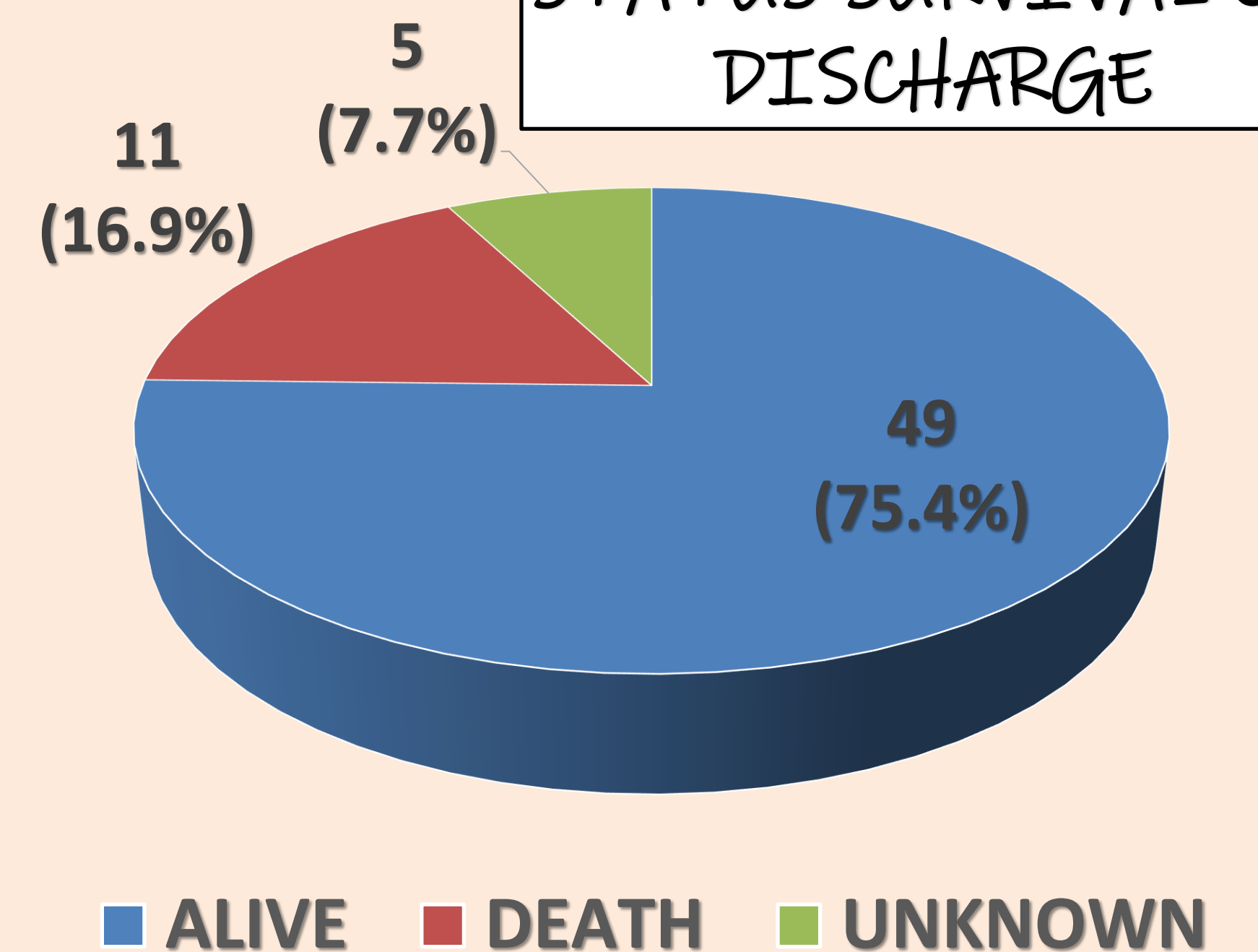
MECHANISM OF INJURY



INJURY SEVERITY SCALE (ISS)



STATUS SURVIVAL ON DISCHARGE



DISCUSSION

- THE MTR WORKFLOW AT HOSPITAL KAJANG PROVIDES A STRUCTURED SYSTEM WITH :
 - CLEAR ROLE ALLOCATION
 - ENSURING COMPREHENSIVE TRAUMA DATA COLLECTION
 - ACCOUNTABILITY
- REGULAR TRACING AND VERIFICATION HELP MAINTAIN ACCURACY, THOUGH MANUAL RECORDING CAN BE TIME-CONSUMING AND OCCASIONALLY DELAYED.
- DESPITE THESE CHALLENGES, THE PROCESS REMAINS FEASIBLE AND VALUABLE FOR GUIDING QUALITY IMPROVEMENT AND TRAUMA CARE POLICY.

CONCLUSION

- THIS PILOT STUDY CONFIRMS THE FEASIBILITY OF IMPLEMENTING THE MTR AT INSTITUTIONAL LEVEL
- THE FINDINGS HIGHLIGHT:
 - THE NEED FOR TARGETED PREVENTION
 - STREAMLINED TRAUMA CARE PATHWAYS
 - WIDER REGISTRY PARTICIPATION TO STRENGTHEN MALAYSIA'S TRAUMA SYSTEM

REFERENCES

- Sabariah, F.J., Ramesh, N., Mahathar, A.W. National Trauma database (NTRD): Improving Trauma care.
- Chew, K.S., & Chan, H.C. (2020). Prehospital Care in Malaysia: Issues and Challenges. International Journal of Prehospital Practice.
- National Institute for Health and Care Excellence (NICE). Rehabilitation after traumatic injury (NICE Guideline NG211). <https://www.nice.org.uk/guidance/ng211>

KEYWORDS: Malaysia Trauma Registry, ISS, Road Traffic Accident, Outcomes



EMERGENCY AND TRAUMA DEPARTMENT
HOSPITAL TENGKU PERMAISURI NORASHIKIN (HTPN)
KAJANG

